



LIVE IN
SUNSHINE
APARTMENTS



COASTAL LIVING WITH ACCESS TO EVERYTHING

It's easy to enjoy the wonderful sense of belonging at Livein Sunshine, a brand new four-storey luxury apartment complex just 350 meters from the sea, in Agios Athanasios, Limassol. Here you will find an apartment home where you feel safe and comfortable. Here you can decorate your home to make it uniquely yours and hang your favourite artwork. Even if you need to work in the nearby city, when you've created a cosy living space in your apartment, you can come home, relax and enjoy being a part of a wonderful community around you. And with its prime location, Livein Sunshine represents an excellent investment opportunity for those looking to buy a high-end apartment in Limassol.

LIFESTYLE PLUS... AN URBAN PARADISE

This sophisticated modern complex comprises 13 apartments with one or three bedrooms. Stylish, modern architectural design allows Livein Sunshine to blend perfectly with its surroundings. Apartments range in size from 50m² to 300m² – offering potential homeowners a variety of options. Each apartment has its own balcony, providing residents with views of the city and the sea. Livein Sunshine is located just a short walk from the seafront, making it the perfect place for those who enjoy watersports and the cafe lifestyle.

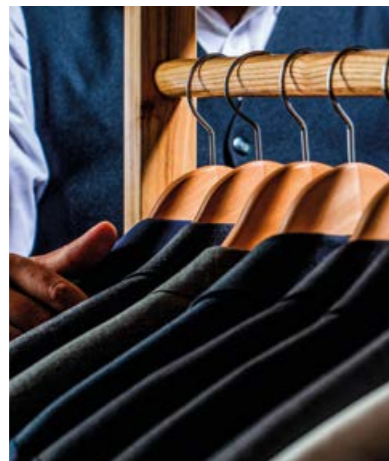
FACILITIES

1. Secure gated property
2. Swimming Pool
3. Parking
4. Storage rooms
5. Lobby with lifts



THE MAGNETIC APPEAL OF LIMASSOL

It comes as no surprise that Limassol boasts clean sandy beaches, excellent water-sport and recreation facilities, award-winning dining and clubbing venues, and fascinating historical and cultural treasures.



The city attracts highly-skilled technical, financial and commercial business professionals – forming a valuable pool of human resources for in-bound companies. These professionals not only work hard, they also play hard – drawn to the city by its extensive range of leisure, entertainment and up-market shopping options.



LIVEIN
SUNSHINE
APTS.

GETTING AROUND LIMASSOL

Convenience is one of the most compelling aspects to any buyer of a Livein property, so access to the many amenities that Limassol offers is always high of our list of priorities when selecting our locations. The main business hub, the courts, municipal offices, banks, shopping facilities, malls, schools and colleges, Limassol Marina, the seafront Molos, and the highway and transport network are readily accessed from all of our project sites.

FROM HALCYON APTS.

Restaurants, Bars, Cafes 5mins	Banks, & Services 5mins	Local Schools 5-8mins	International Schools 10-15mins	Troodos 40mins	Paphos 35mins	Nicosia 45mins
Beach 5mins	Shopping 5mins	Clinics 10-15mins	Spa & Hotels 10mins	Airports 35mins	Larnaca 35mins	Agia Napa 90mins



Living Areas



Kitchens



Bedrooms



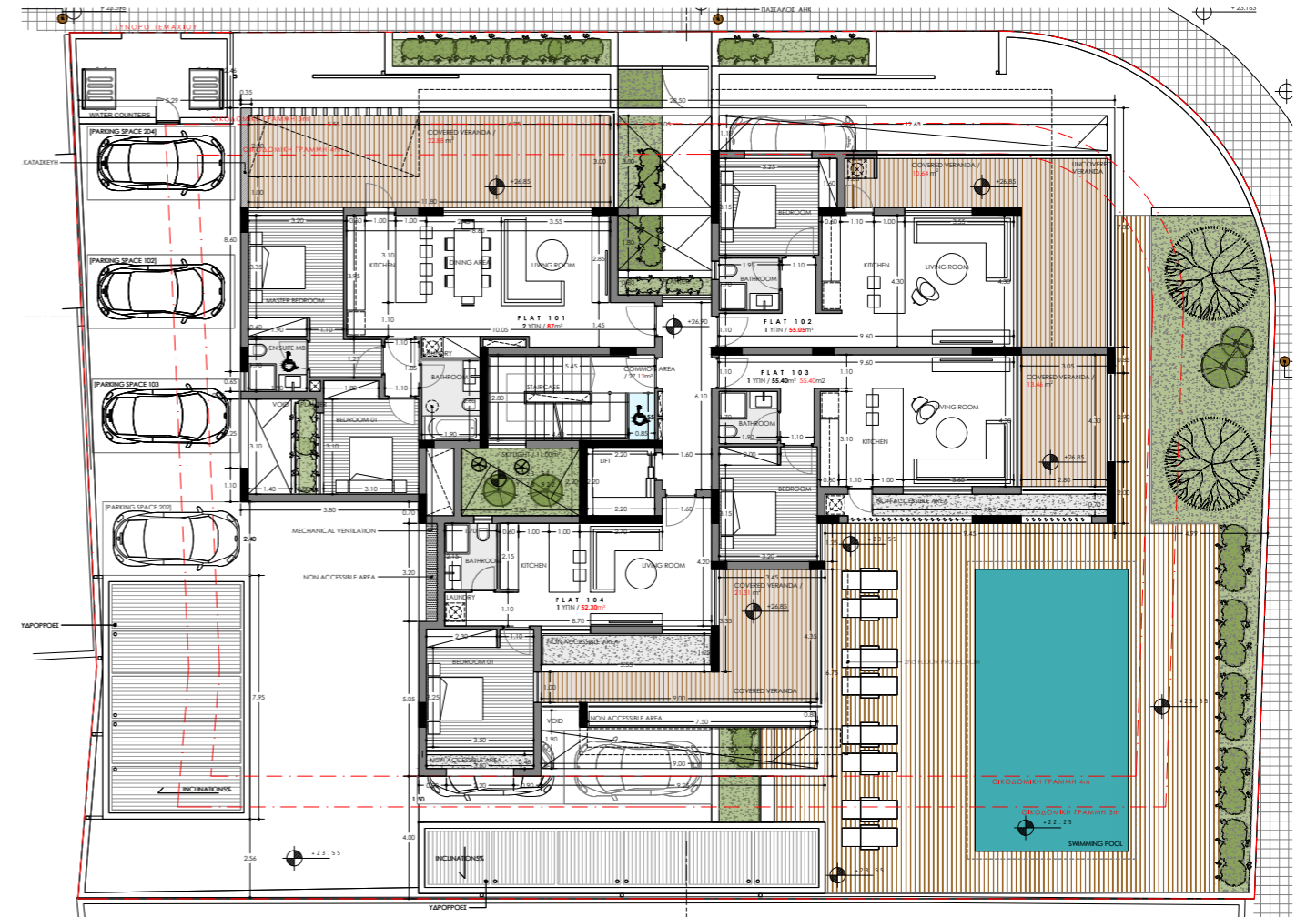
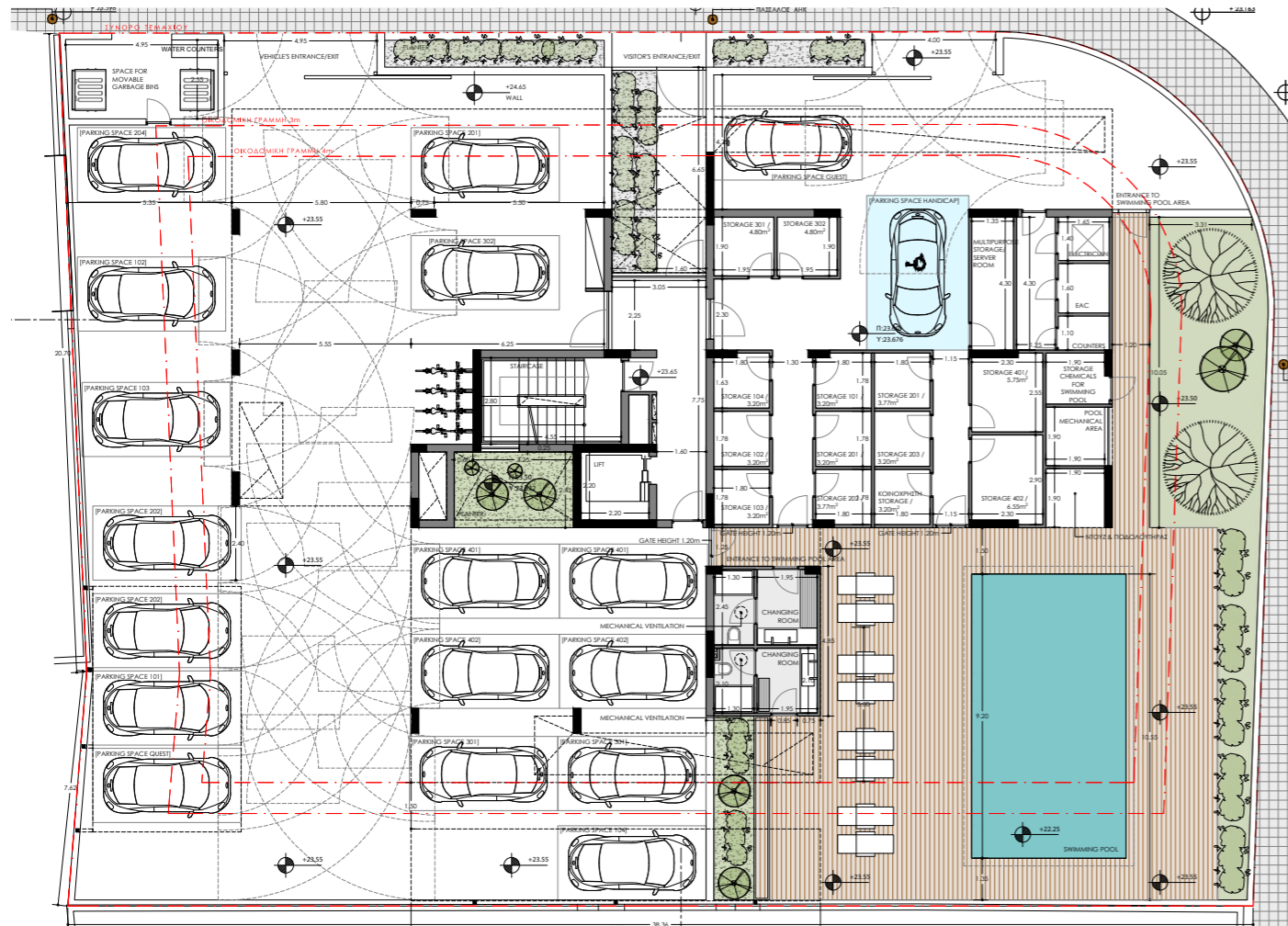
Bathrooms

THE APARTMENTS

Livein Sunshine apartments are perfect for singles, couples or small families. Each home blends modern design with functionality, featuring open layouts, spacious bedrooms, a well-planned kitchen, and a private balcony – and is environmentally friendly and energy efficient. There are high-speed lifts to all levels and the entire building displays superior craftsmanship and attention to detail. From fully-glazed sun-filled living areas with their deep balconies, to bedrooms flooded with sunlight, to stylish bathrooms, each apartment is an example of fine design. Top floor apartments have exclusive access to the building’s roof-top gardens.

Roof Gardens

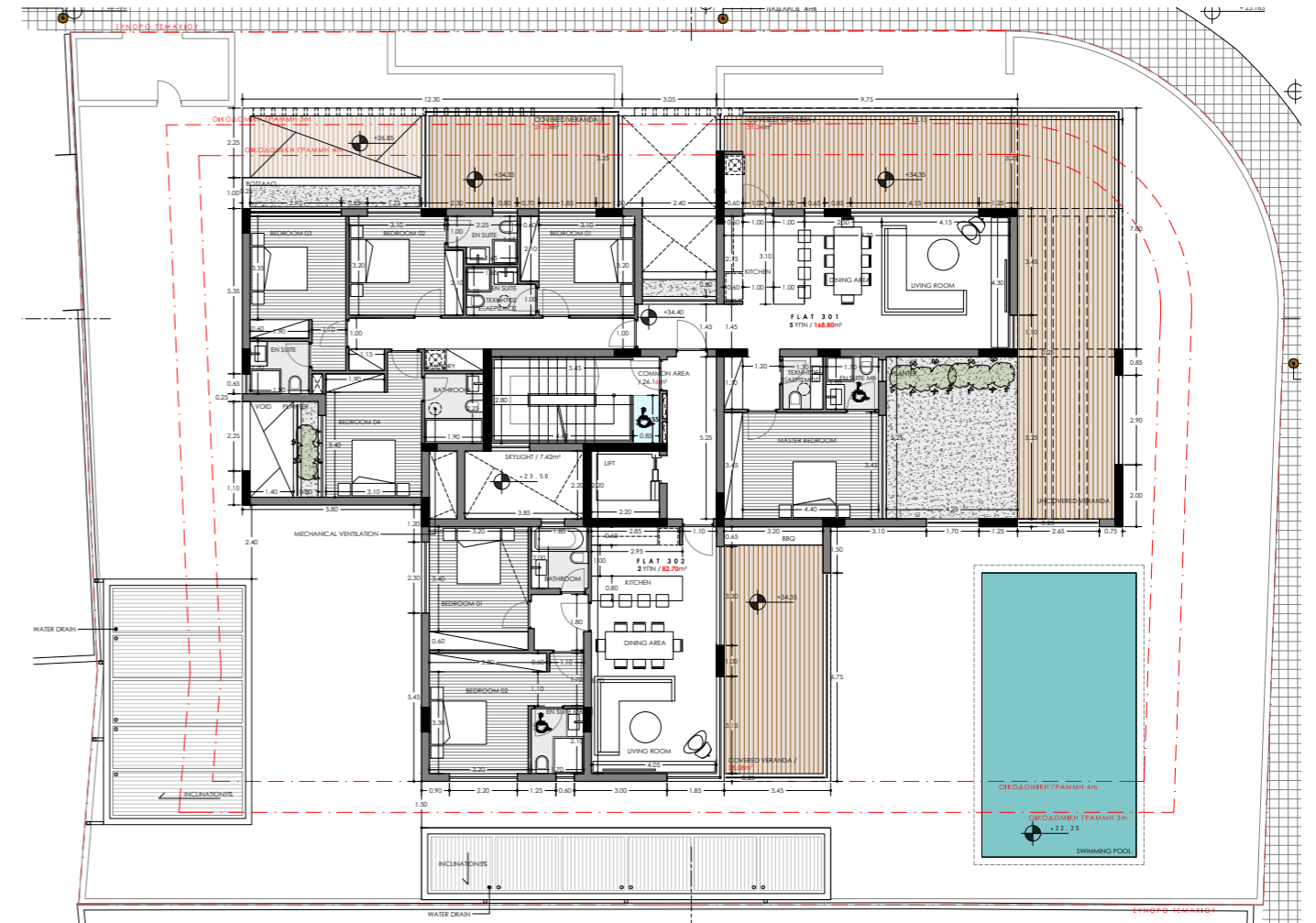
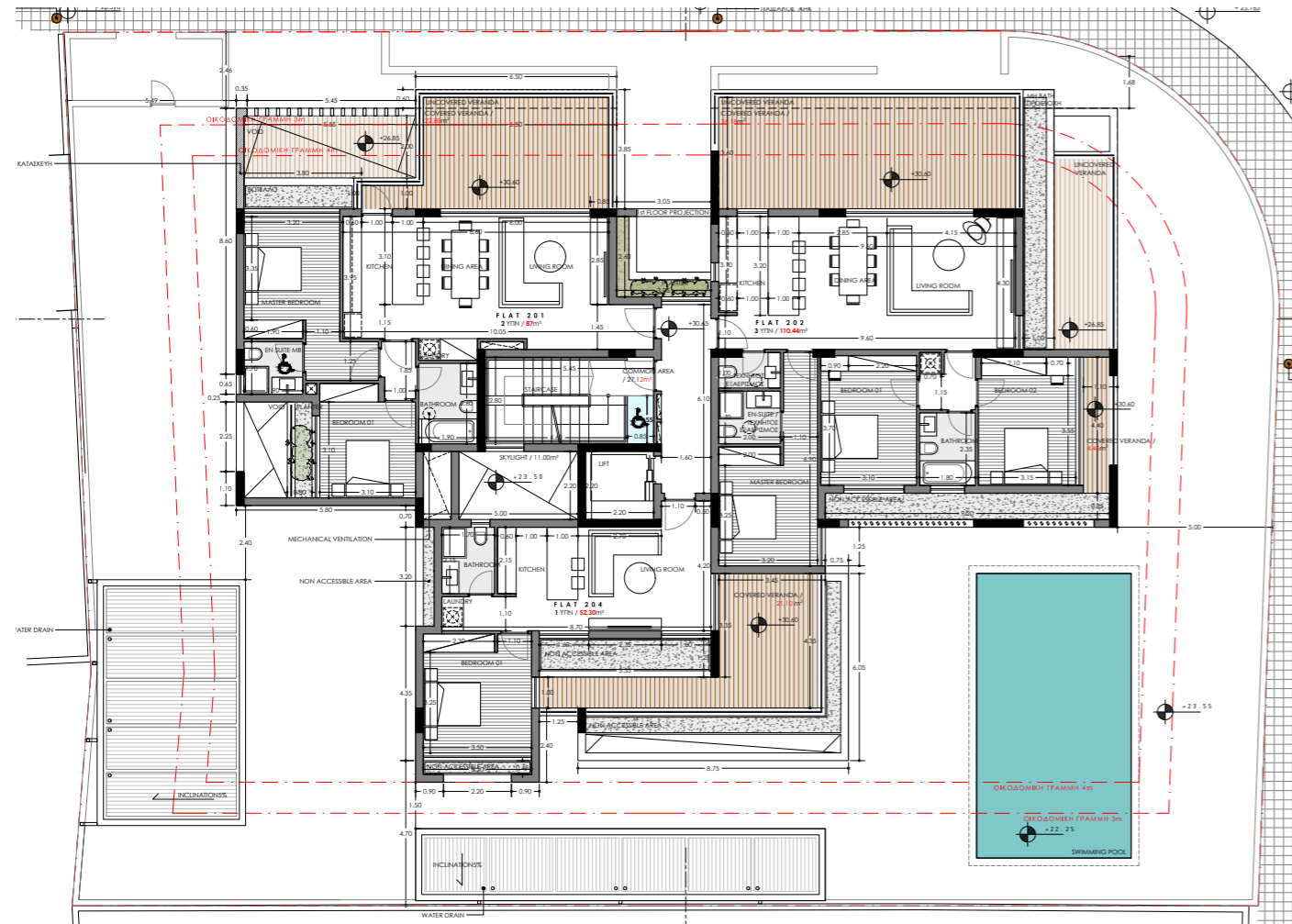




Apartment	Bedrooms	Bathrooms	Total Area (m ²)	Internal Area (m ²)	Covered Verandas (m ²)	Roof Terrace (m ²)	Parking	storage (m ²)
101	2	2	135	86	23	-	1	5
102	1	1	78.5	52	9.5	-	1	4
103	1	1	88	50	22	-	1	4
104	2	2	148.5.2	86	35	-	1	6.5

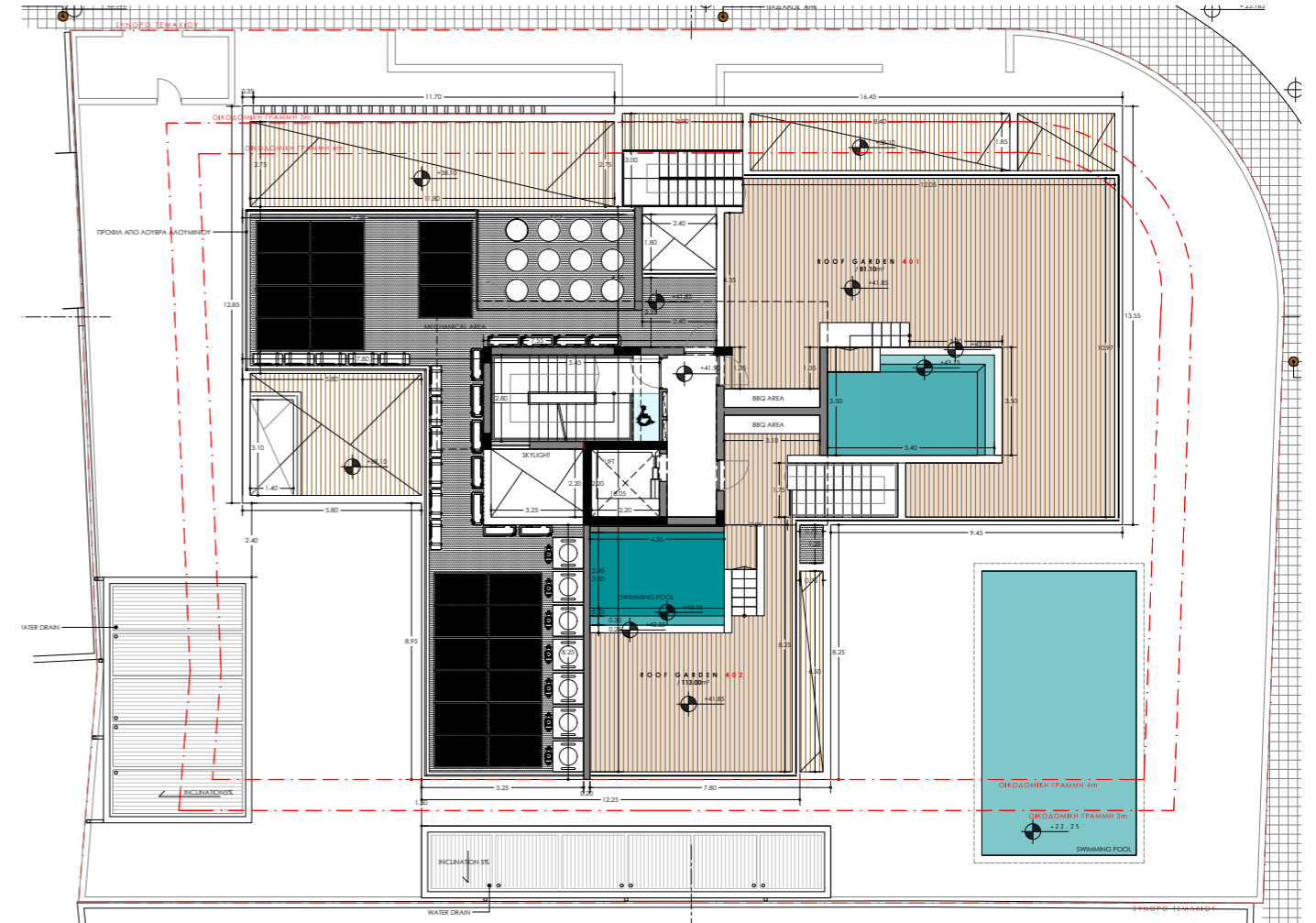
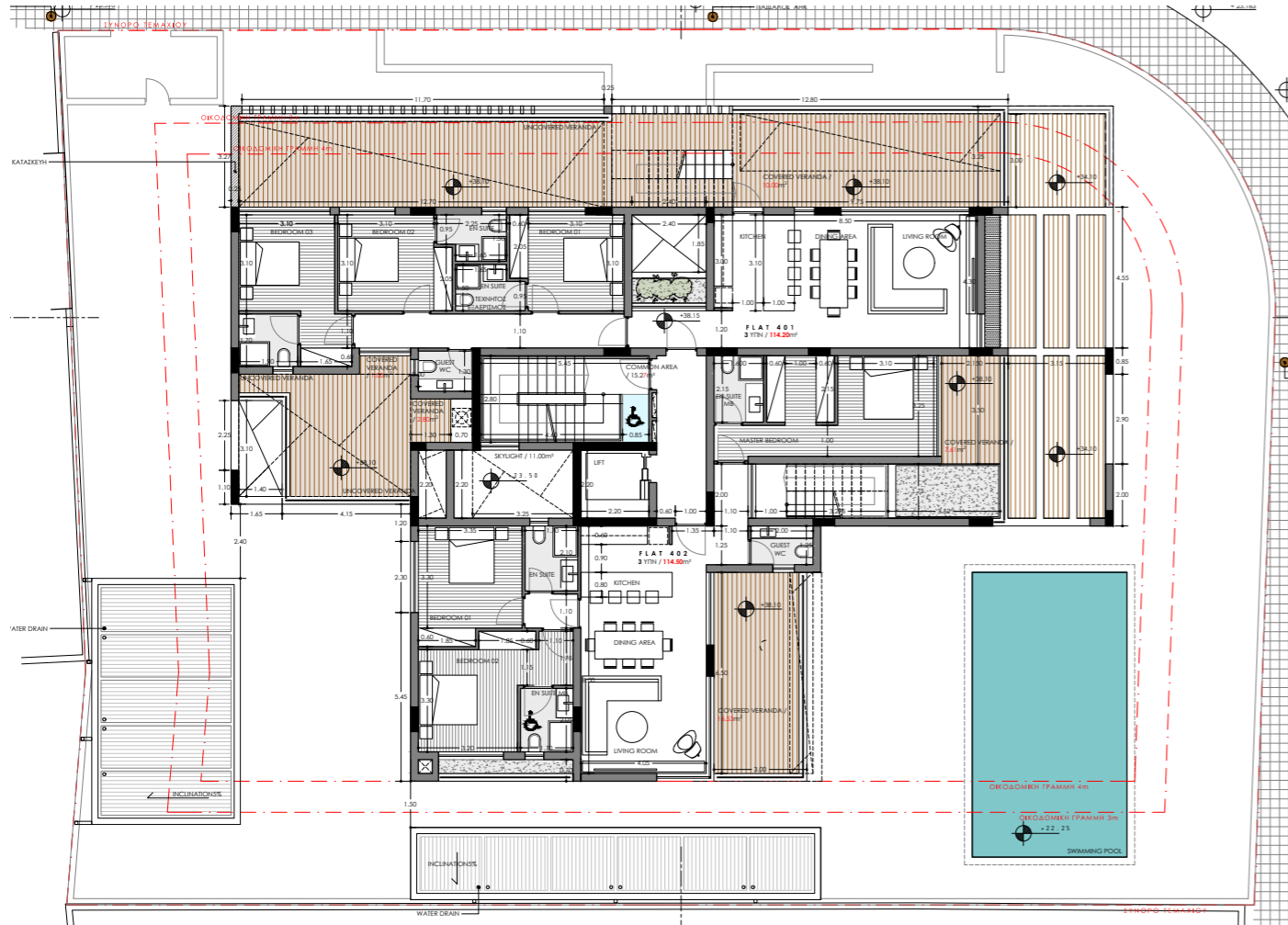
FL 2

FL 3



Apartment	Bedrooms	Bathrooms	Total Area (m ²)	Internal Area (m ²)	Covered Verandas (m ²)	Roof Terrace (m ²)	Parking	storage (m ²)
201	2	2	133	86	23	-	1	3
202	3	3	199.5	118	50	-	1	2.5
203	2	2	127.5	86	18	-	1	2.5
204	1	1	77.5	50	13	-	1	2.5

Apartment	Bedrooms	Bathrooms	Total Area (m ²)	Internal Area (m ²)	Covered Verandas (m ²)	Roof Terrace (m ²)	Parking	storage (m ²)
301	2	2	133	86	21	-	1	3
302	3	3	200	118	29	-	1	3
303	3	2	134	86	21	-	1	3
304	1	1	78.5	50	12	-	1	3



Apartment	Bedrooms	Bathrooms	Total Area (m ²)	Internal Area (m ²)	Covered Verandas (m ²)	Roof Terrace (m ²)	Parking	storage (m ²)
401	4	3	445	149	105	144	2	10
402	4	3	373	144	63	122	2	8





Livein Properties is a fully integrated development and construction company dedicated to creating better homes for people to live, learn, work and play. We focus on the area we know best – Limassol and the south coast of Cyprus – and have over 35 years of combined expertise in property and infrastructure construction, civil engineering and project management.

Our finger is on the pulse of what buyers want, and we continually monitor market trends and implement best practices to enhance building techniques, operations and residents' living experience. Clients rely on our diversified skills and depth of knowledge to maximize asset quality and secure strong investment returns.

All computer generated images included in this brochure are indicative of final specification and are subject to change. Information in this brochure has been prepared solely for the purpose of providing general information about the development and we have taken every care to ensure that the information provided is accurate at the time of its inclusion in this brochure, but do not guarantee the accuracy or completeness and shall not be liable for any loss or damage which may arise from reliance on the information. All illustrations and computer generated images reflect the artists' interpretation of the project and do not take into account the neighbouring buildings, physical structures, streets and landscape. The developers reserve the right to make modifications and changes to any or all architectural and interior features and finishes, brands, colours, materials, building design, specifications, ceiling heights, flooring patterns and floor plans without notification. Actual plans may have minor variations to the typical plans shown in this brochure. All matters will be governed by the applicable purchase and sales agreement. The company retains the copyright of all material in this brochure and may change the content or format at any time.

**8, Georgiou A' Street,
4077 Germasogeia, Limassol-Cyprus**

**Tel: +357 25 320 520,
Fax: +357 25 320 521
info@livein.com.cy,
www.livein.com.cy**



SCAN TO VISIT
PROPERTY ONLINE