

LIVEIN  
DASOUDI 4  
APARTMENTS

  
LIVEIN  
P R O P E R T I E S



# MODERN LIVING AMIDST A THRIVING COMMUNITY

Dasoudi 4 is an elegant collection of one, two and three bedroom apartments and penthouses in a boutique development set right in the heart of Limassol's most popular suburb. Created by the talented team at Livein Properties, Dasoudi 4 embraces innovative design and specific tailoring to complement today's evolving lifestyles. This attractive project offers a blend of modern design and timeless elegance, catering to discerning buyers looking for luxury and convenience. Dasoudi 4 is more than a place to live – it's a lifestyle destination that promises a perfect combination of tranquillity and urban sophistication.

# DISCREET SOPHISTICATION AND MODERN COMFORTS

These meticulously designed residences, set over four floors, offer configurations ranging from spacious one, two, or three bedroom apartments to elegant penthouses with private roof gardens and pools. Each apartment features expansive floor areas, high ceilings, and large windows that flood the interiors with natural light, creating an inviting home setting. Flexible layouts cater to the diverse needs of modern living, whilst the use throughout of premium finishes, fixtures and fittings enhances the elegance of the overall ambiance.

## FACILITIES

1. Secure gated property
2. Swimming Pool
3. Parking
4. Storage rooms
5. Lobby with lifts



# THE MAGNETIC APPEAL OF LIMASSOL

It comes as no surprise that Limassol boasts clean sandy beaches, excellent water-sport and recreation facilities, award-winning dining and clubbing venues, and fascinating historical and cultural treasures.



The city attracts highly-skilled technical, financial and commercial business professionals – forming a valuable pool of human resources for in-bound companies. These professionals not only work hard, they also play hard – drawn to the city by its extensive range of leisure, entertainment and up-market shopping options.



LIVEIN  
DASOUDI 4  
APTS.

# GETTING AROUND LIMASSOL

Convenience is one of the most compelling aspects to any buyer of a Livein property, so access to the many amenities that Limassol offers is always high of our list of priorities when selecting our locations. The main business hub, the courts, municipal offices, banks, shopping facilities, malls, schools and colleges, Limassol Marina, the seafront Molos, and the highway and transport network are readily accessed from all of our project sites.

## FROM DASOUDI APTS.

Restaurants, Bars, Cafes 5mins	Banks, & Services 5mins	Local Schools 5-8mins	International Schools 10-15mins	Troodos 40mins	Paphos 35mins	Nicosia 45mins
Beach 5mins	Shopping 5mins	Clinics 10-15mins	Spa & Hotels 10mins	Airports 35mins	Larnaca 35mins	Agia Napa 90mins



Living Areas



Well Designed Spaces



Bedrooms



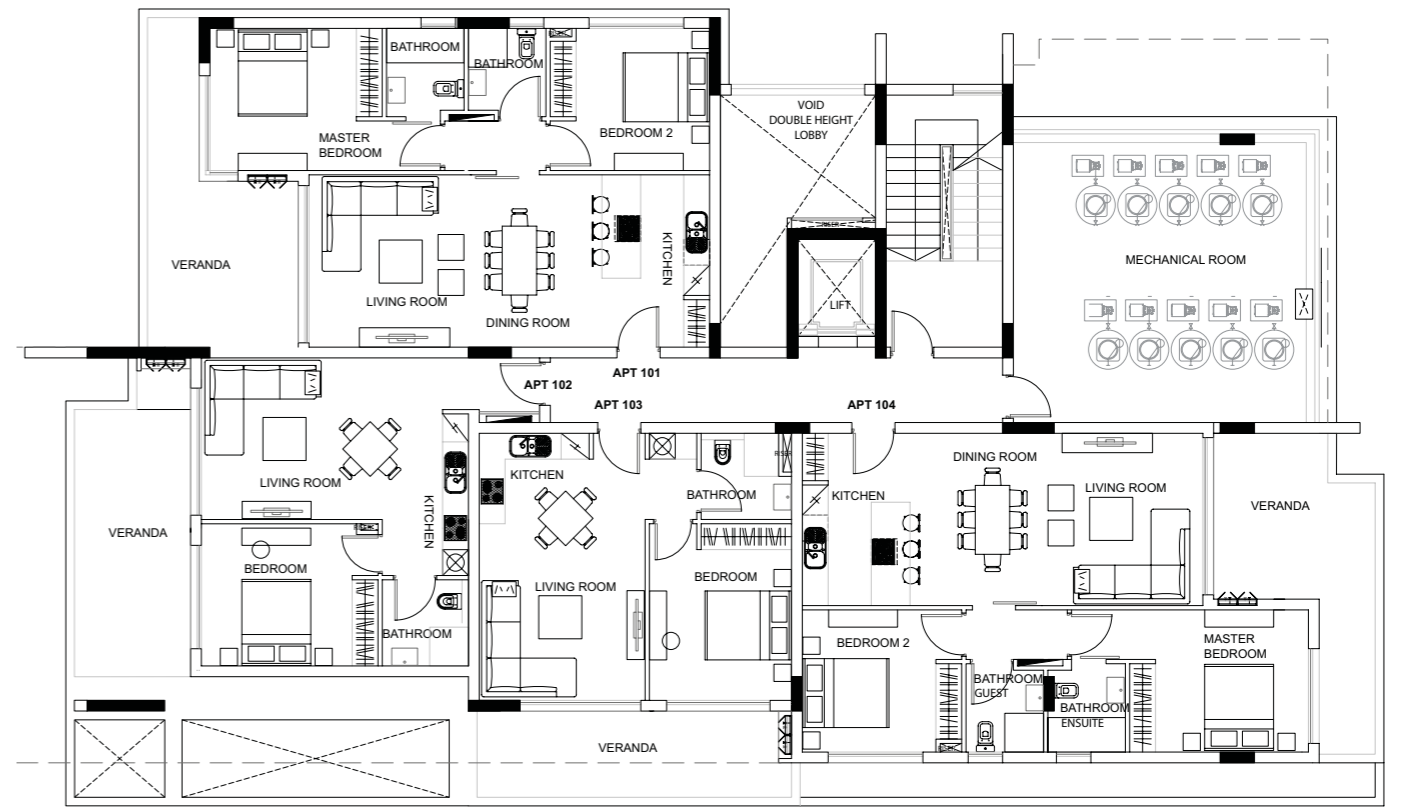
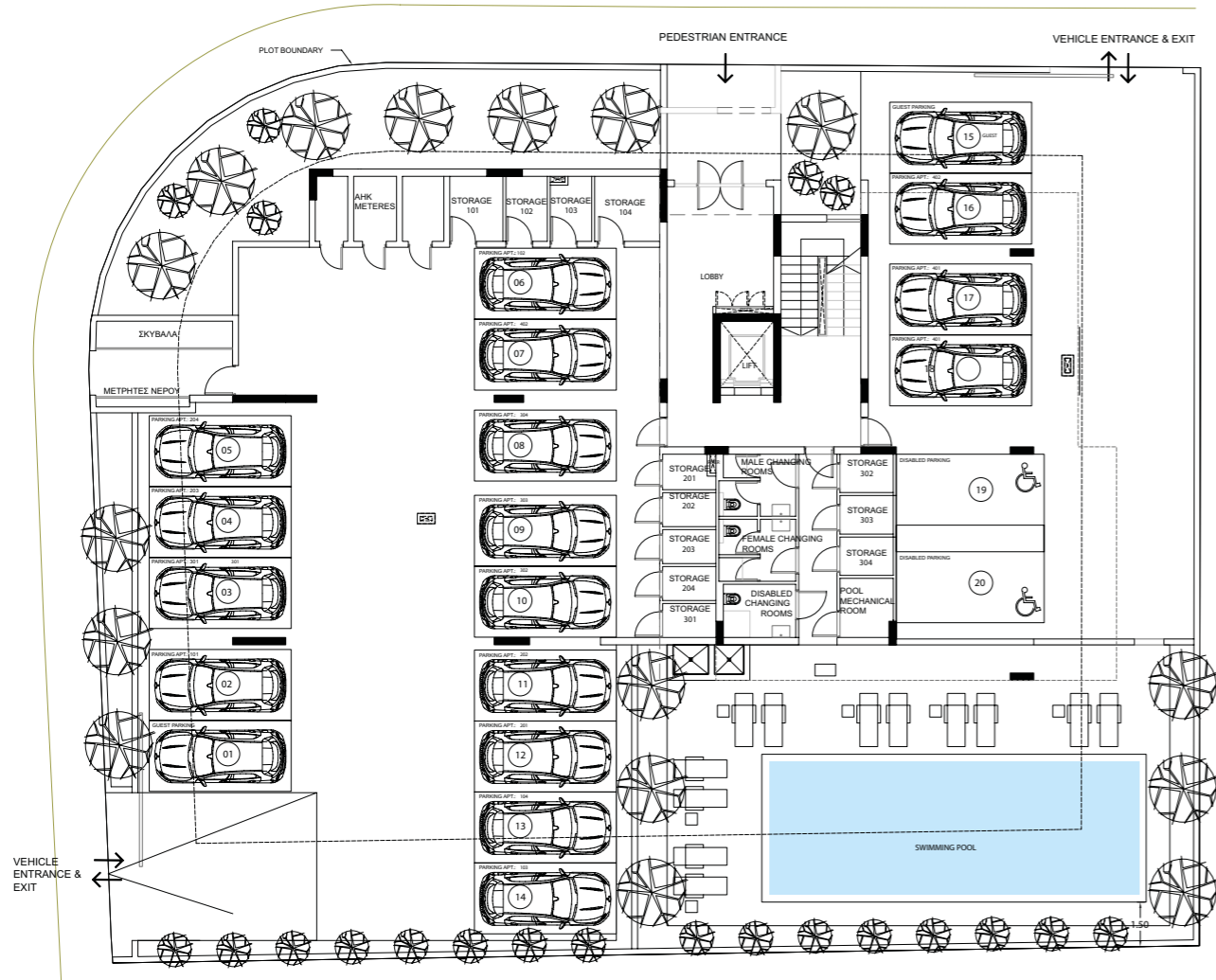
Bathrooms

# THE APARTMENTS

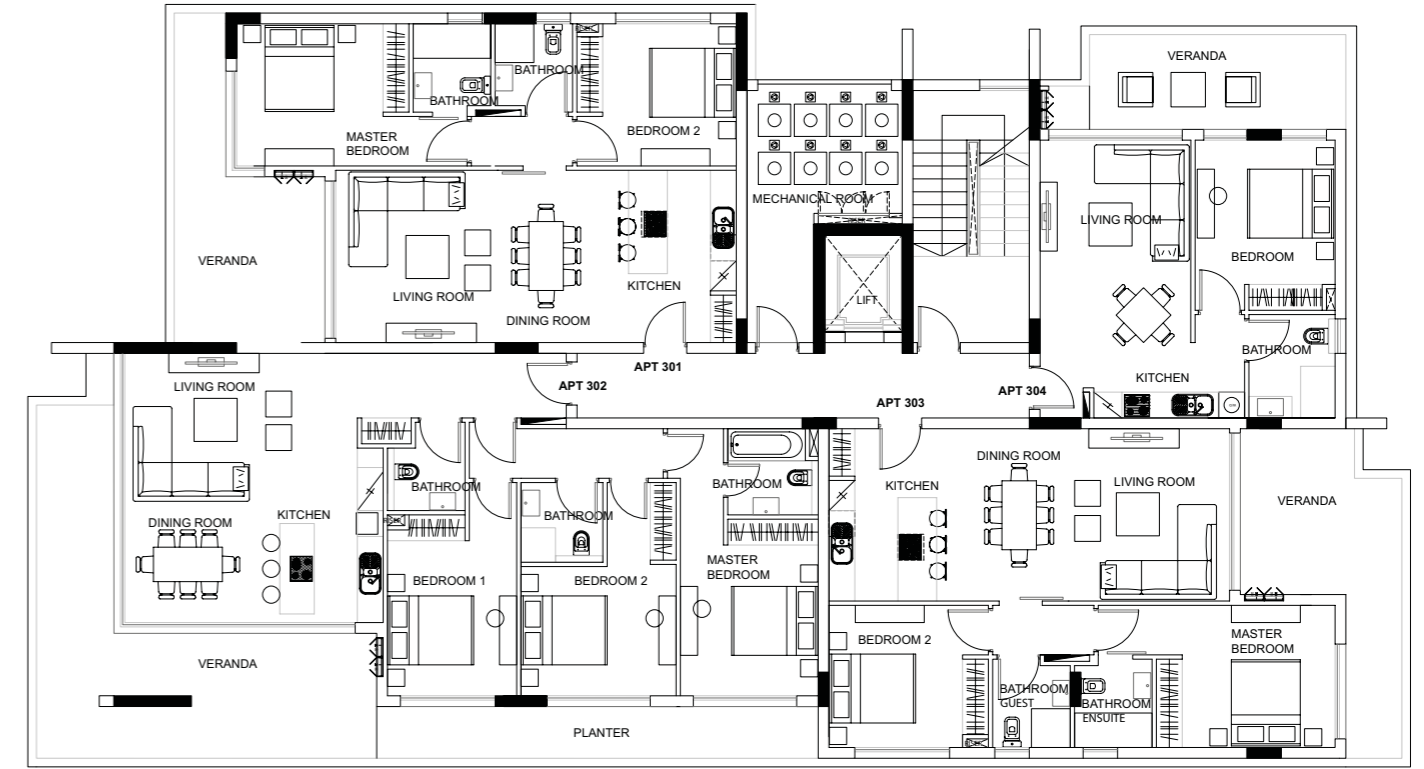
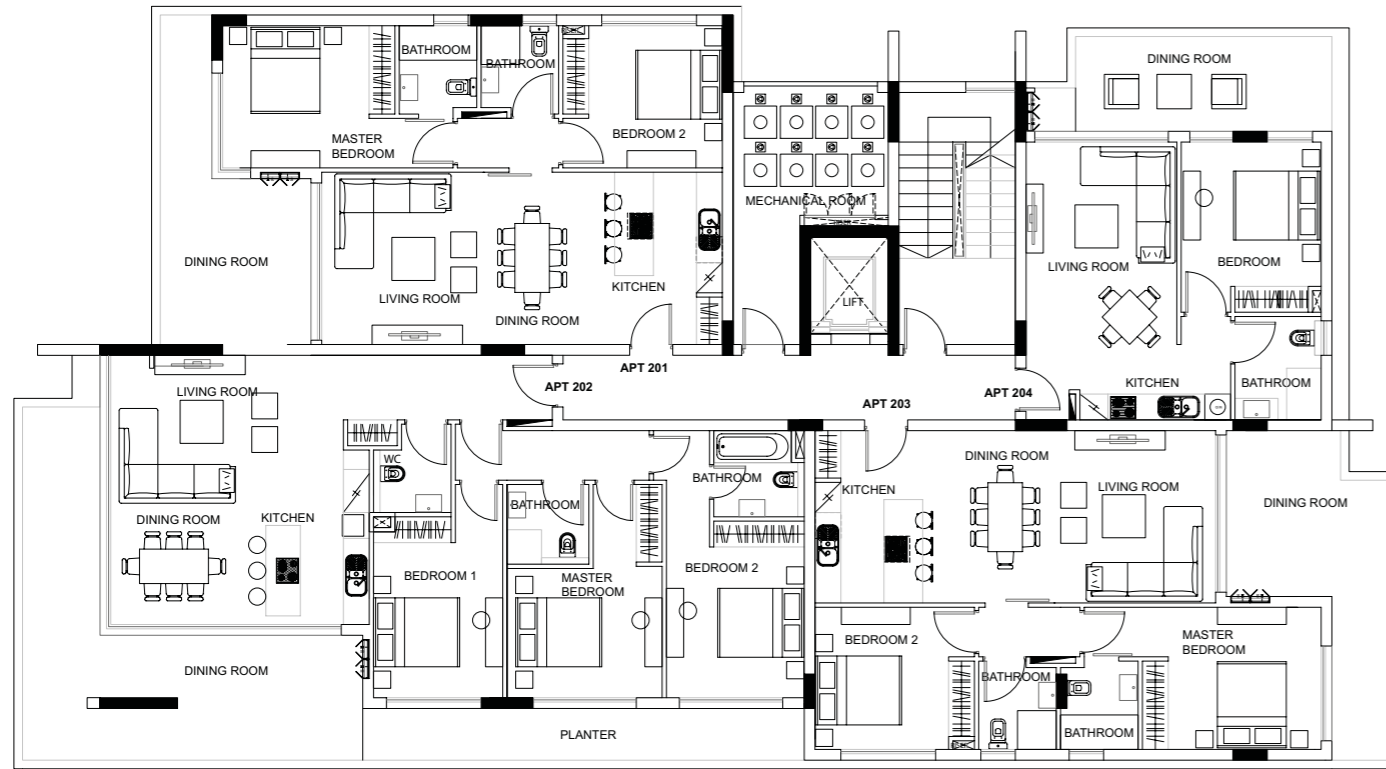
High-speed lifts from the welcoming lobby take residents to apartments that display superior craftsmanship and attention to detail. From fully-glazed spacious lounges and their deep-set balconies, to bedrooms flooded with sunlight, to stylish bathrooms, each apartment is adorned with sleek surfaces, fine ceramics and well-crafted cabinetry. Kitchens are a gourmet's delight, arranged to maximise the chef's potential and to be at the heart of the home.

Roof Gardens



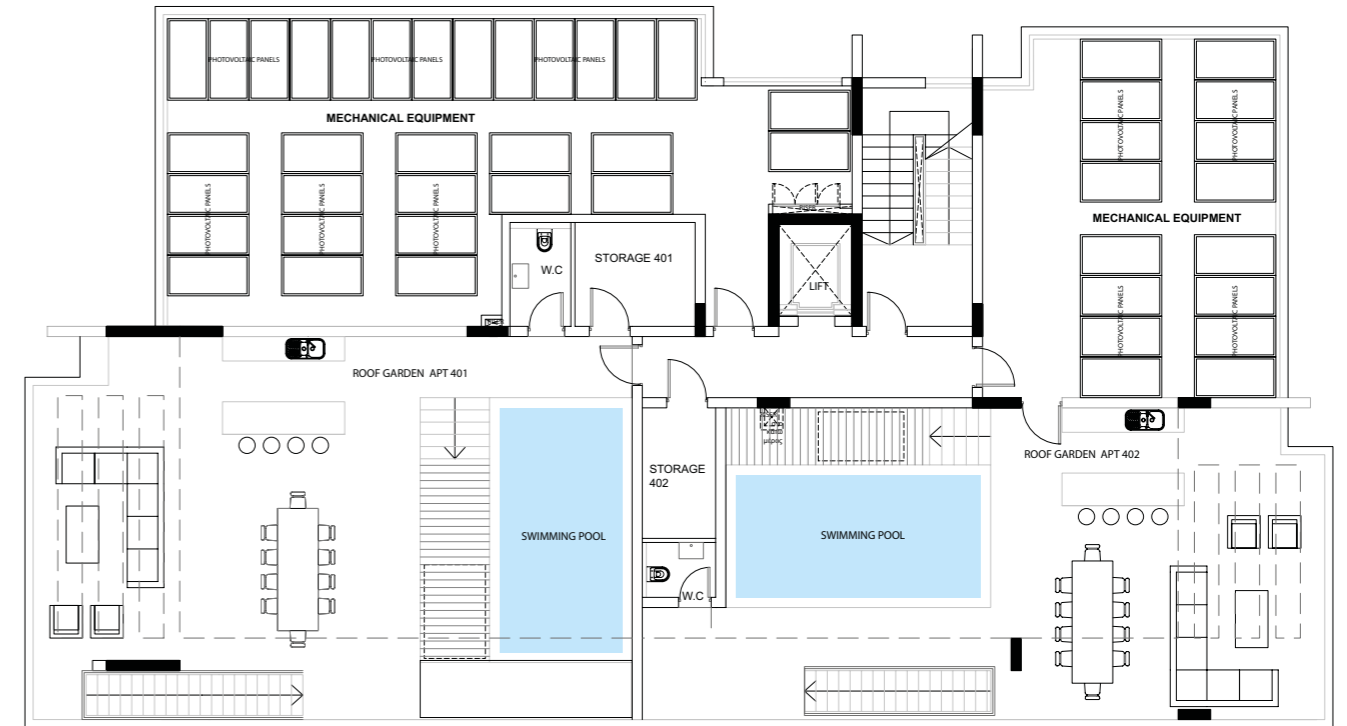
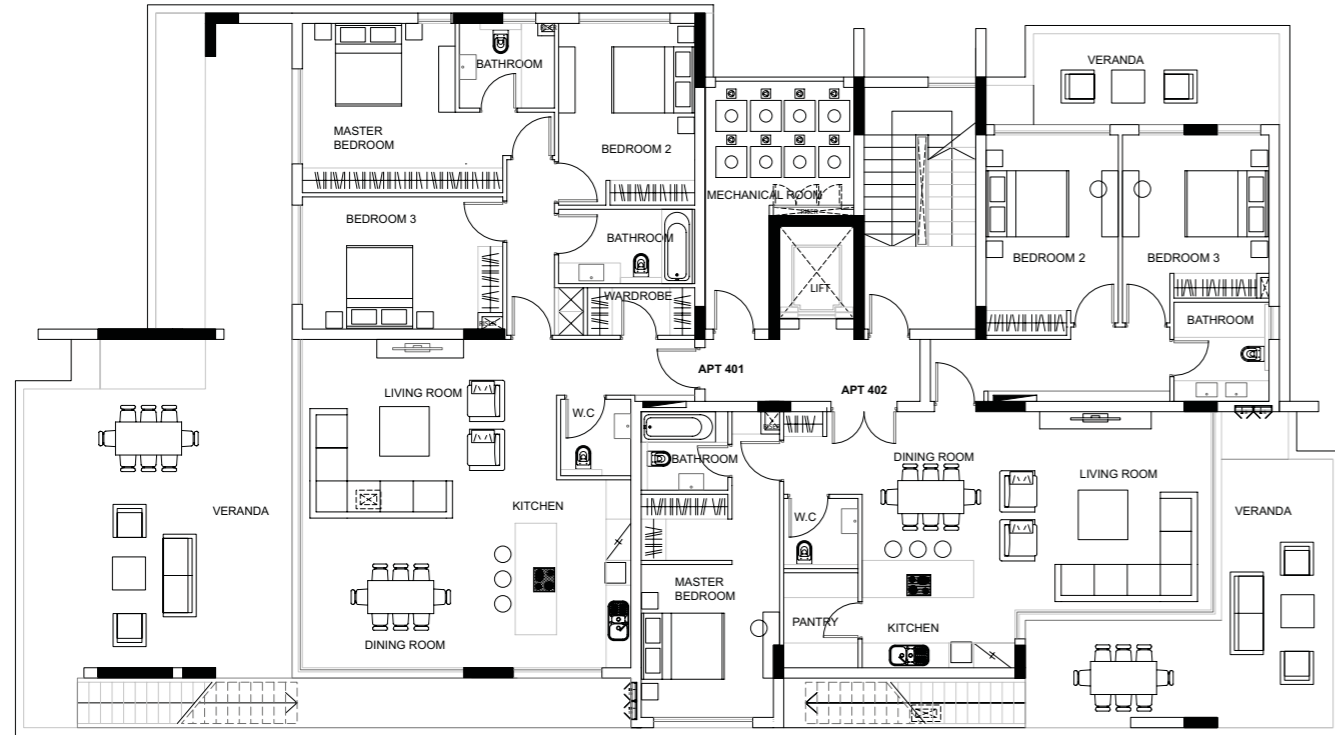


Apartment	Bedrooms	Bathrooms	Total Area (m <sup>2</sup> )	Internal Area (m <sup>2</sup> )	Covered Verandas (m <sup>2</sup> )	Roof Terrace (m <sup>2</sup> )	Parking	storage (m <sup>2</sup> )
101	2	2	135	86	23	-	1	5
102	1	1	78.5	52	9.5	-	1	4
103	1	1	88	50	22	-	1	4
104	2	2	148.5.2	86	35	-	1	6.5



Apartment	Bedrooms	Bathrooms	Total Area (m <sup>2</sup> )	Internal Area (m <sup>2</sup> )	Covered Verandas (m <sup>2</sup> )	Roof Terrace (m <sup>2</sup> )	Parking	storage (m <sup>2</sup> )
201	2	2	133	86	23	-	1	3
202	3	3	199.5	118	50	-	1	2.5
203	2	2	127.5	86	18	-	1	2.5
204	1	1	77.5	50	13	-	1	2.5

Apartment	Bedrooms	Bathrooms	Total Area (m <sup>2</sup> )	Internal Area (m <sup>2</sup> )	Covered Verandas (m <sup>2</sup> )	Roof Terrace (m <sup>2</sup> )	Parking	storage (m <sup>2</sup> )
301	2	2	133	86	21	-	1	3
302	3	3	200	118	29	-	1	3
303	3	2	134	86	21	-	1	3
304	1	1	78.5	50	12	-	1	3



Apartment	Bedrooms	Bathrooms	Total Area (m <sup>2</sup> )	Internal Area (m <sup>2</sup> )	Covered Verandas (m <sup>2</sup> )	Roof Terrace (m <sup>2</sup> )	Parking	storage (m <sup>2</sup> )
401	3	3	445	149	105	144	2	10
402	3	3	373	144	63	122	2	8



Livein Properties is a fully integrated development and construction company dedicated to creating better homes for people to live, learn, work and play. We focus on the area we know best – Limassol and the south coast of Cyprus – and have over 35 years of combined expertise in property and infrastructure construction, civil engineering and project management.

Our finger is on the pulse of what buyers want, and we continually monitor market trends and implement best practices to enhance building techniques, operations and residents' living experience. Clients rely on our diversified skills and depth of knowledge to maximize asset quality and secure strong investment returns.

All computer generated images included in this brochure are indicative of final specification and are subject to change. Information in this brochure has been prepared solely for the purpose of providing general information about the development and we have taken every care to ensure that the information provided is accurate at the time of its inclusion in this brochure, but do not guarantee the accuracy or completeness and shall not be liable for any loss or damage which may arise from reliance on the information. All illustrations and computer generated images reflect the artists' interpretation of the project and do not take into account the neighbouring buildings, physical structures, streets and landscape. The developers reserve the right to make modifications and changes to any or all architectural and interior features and finishes, brands, colours, materials, building design, specifications, ceiling heights, flooring patterns and floor plans without notification. Actual plans may have minor variations to the typical plans shown in this brochure. All matters will be governed by the applicable purchase and sales agreement. The company retains the copyright of all material in this brochure and may change the content or format at any time.

**8, Georgiou A' Street,  
4077 Germasogeia, Limassol-Cyprus**

**Tel: +357 25 320 520,  
Fax: +357 25 320 521  
info@livein.com.cy,  
www.livein.com.cy**



SCAN TO VISIT  
PROPERTY ONLINE