



**LIVEIN  
STAR  
APARTMENTS**



## A LIFESTYLE DEFINED BY LUXURY

Welcome to Livein Star, where quality building traditions embrace a contemporary reinterpretation of the urban lifestyle. Livein Star offers a prestigious range of architect-designed apartments that combine sculptural integrity and refined interiors, and comprise one, two and three bedroom options plus penthouse apartments with private roof gardens and pools. Residential living and community life are perfectly blended with cutting-edge architectural styling and the natural green spaces of the neighbourhood.

# MODERN RESIDENCES WITH ELEGANT URBAN SOPHISTICATION

Livein Star masterfully integrates inspired architecture and sophisticated interiors to create an environment that will appeal to those whose desire is to enjoy Limassol's unique indoor/outdoor lifestyle. Every effort has been made to maximise residents' experience of fresh air, sunlight, shade, the outdoors and community – to bring the ultimate definition of inner-city cosmopolitan life and take day-to-day living to new heights.

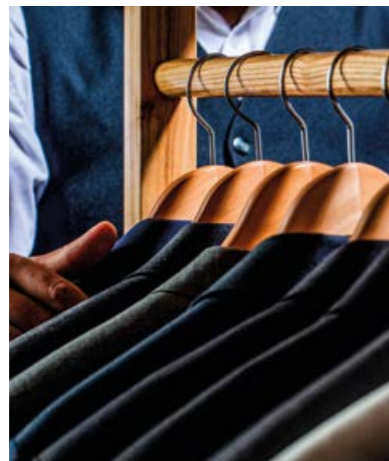
## FACILITIES

1. Secure gated property
2. Parking
3. Storage rooms
4. Lobby with lifts
5. Swimming Pool



# THE MAGNETIC APPEAL OF LIMASSOL

It comes as no surprise that Limassol boasts clean sandy beaches, excellent water-sport and recreation facilities, award-winning dining and clubbing venues, and fascinating historical and cultural treasures.



The city attracts highly-skilled technical, financial and commercial business professionals – forming a valuable pool of human resources for in-bound companies. These professionals not only work hard, they also play hard – drawn to the city by its extensive range of leisure, entertainment and up-market shopping options.



# GETTING AROUND LIMASSOL

Convenience is one of the most compelling aspects to any buyer of a Livein property, so access to the many amenities that Limassol offers is always high of our list of priorities when selecting our locations. The main business hub, the courts, municipal offices, banks, shopping facilities, malls, schools and colleges, Limassol Marina, the seafront Molos, and the highway and transport network are readily accessed from all of our project sites.

## FROM STAR APTS.

Restaurants, Bars, Cafes 5mins	Banks, & Services 5mins	Local Schools 5-8mins	International Schools 10-15mins	Troodos 40mins	Paphos 35mins	Nicosia 45mins
Beach 8mins	Shopping 5mins	Clinics 5-15mins	Spa & Hotels 10mins	Airports 35mins	Larnaca 35mins	Agia Napa 90mins



Living Areas



Kitchen Dining Area



Bedrooms



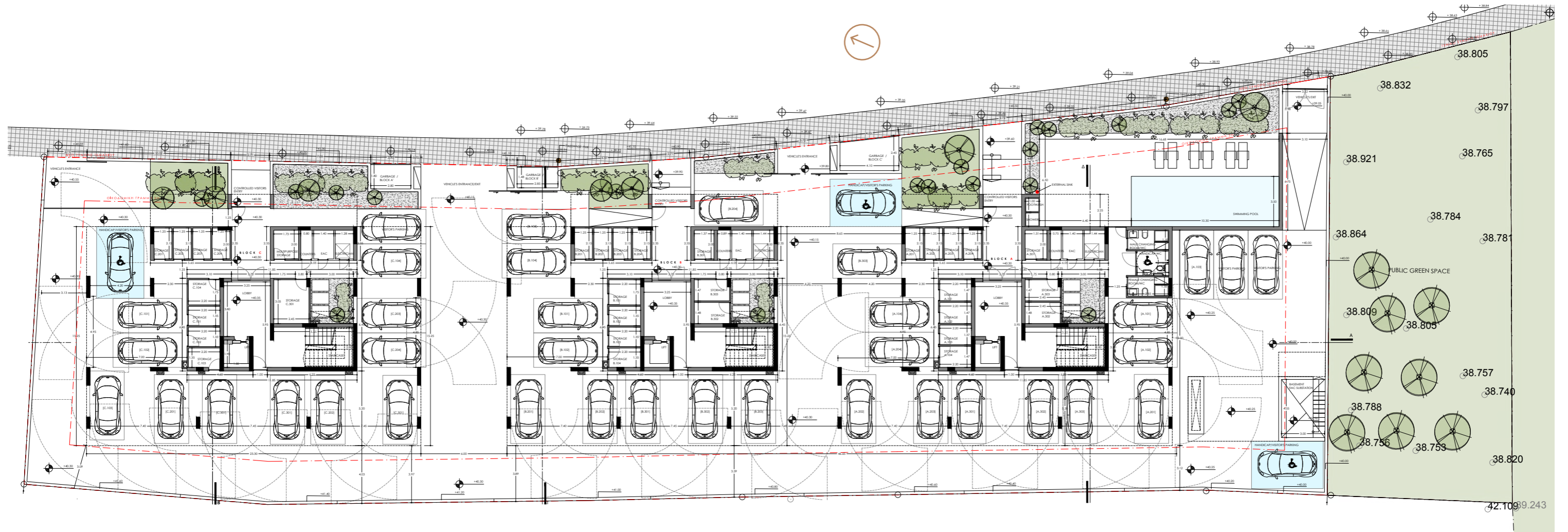
Bathrooms

## THE APARTMENTS

Elegance graces every aspect of the Livein Star collection of meticulously crafted apartments. Architectural finesse harmonises with the elevated landscape, while sophisticated design and luxurious fixtures and finishes transcend expectations and define the interiors. Apartments bathed in natural light offer a serene retreat from the hustle and bustle of daily life and provide ample space for comfortable living. Free-flowing living spaces extend onto deep-set balconies that are the perfect setting for relaxing or entertaining friends or family and taking in the surrounding views.

Roof Gardens



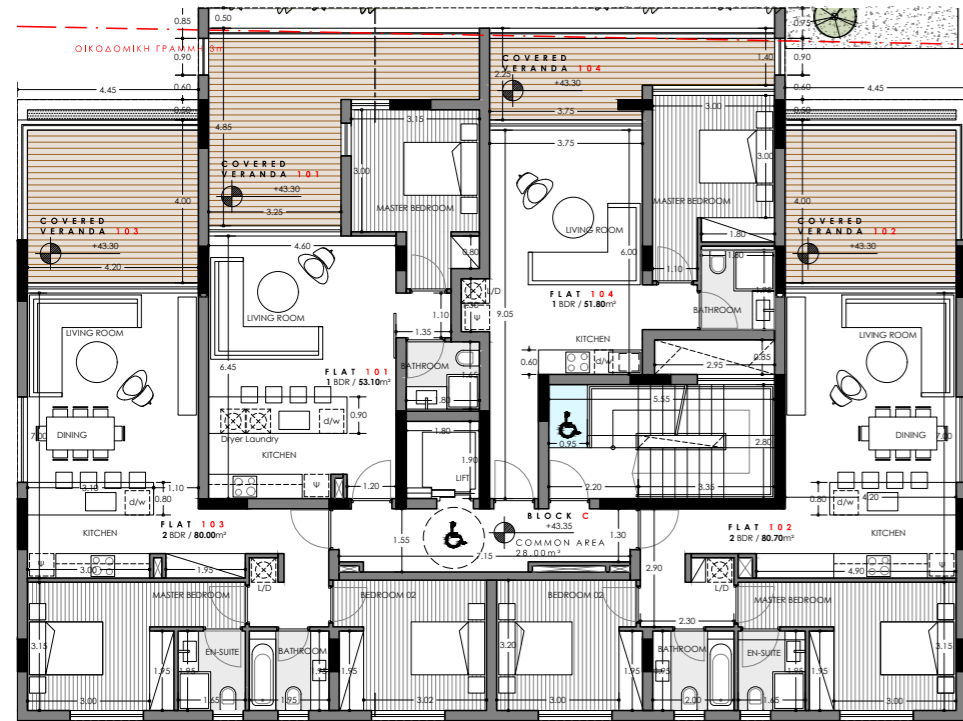


Block C

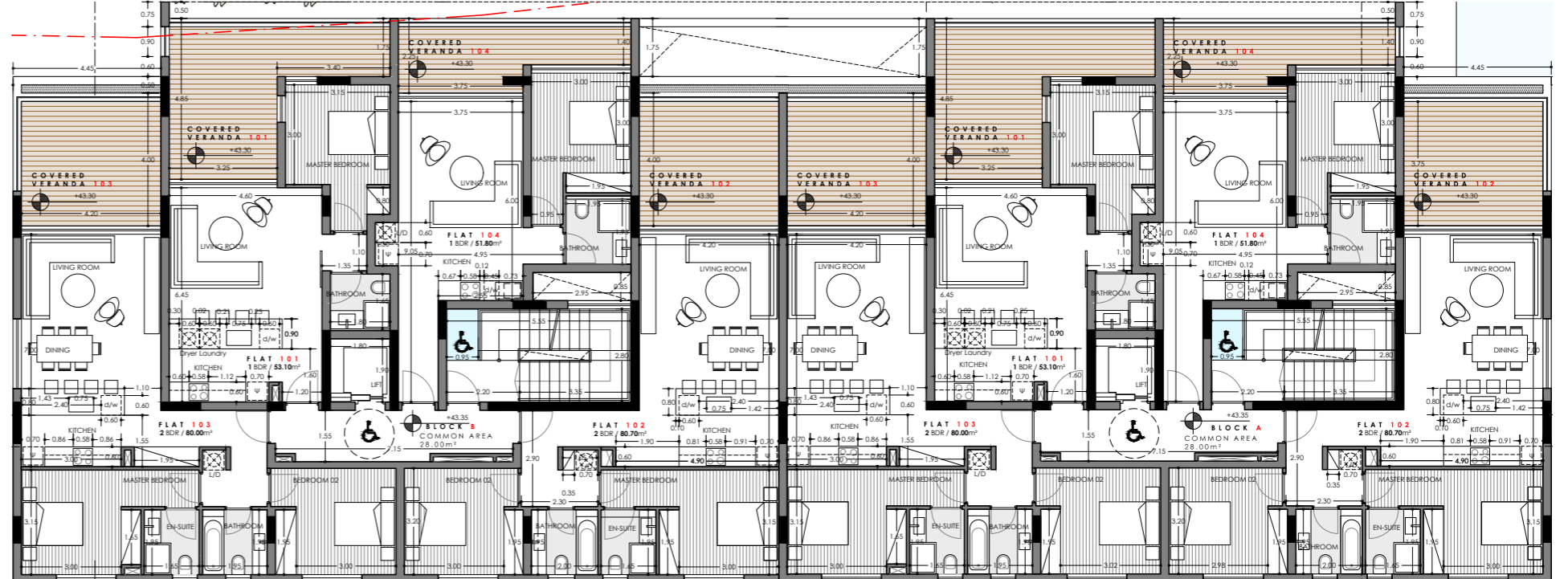
Block B

Block A

Block C



Block B



Block A

Block A

Apartment	Bedrooms	Bathrooms	Total Area (m <sup>2</sup> )	Internal Area (m <sup>2</sup> )	Covered Verandas m <sup>2</sup>	Green Terrace (m <sup>2</sup> )	Roof Terrace (m <sup>2</sup> )	Parking	storage (m <sup>2</sup> )
101	1	1	83.72	53.1	22	-	-	1	4.3
102	2	2	110.79	80.7	17.8	2.2	-	1	3.6
103	2	2	109.29	80	17.3	2.2	-	1	3.35
104	1	1	73.27	51.8	13.6	-	-	1	3.7

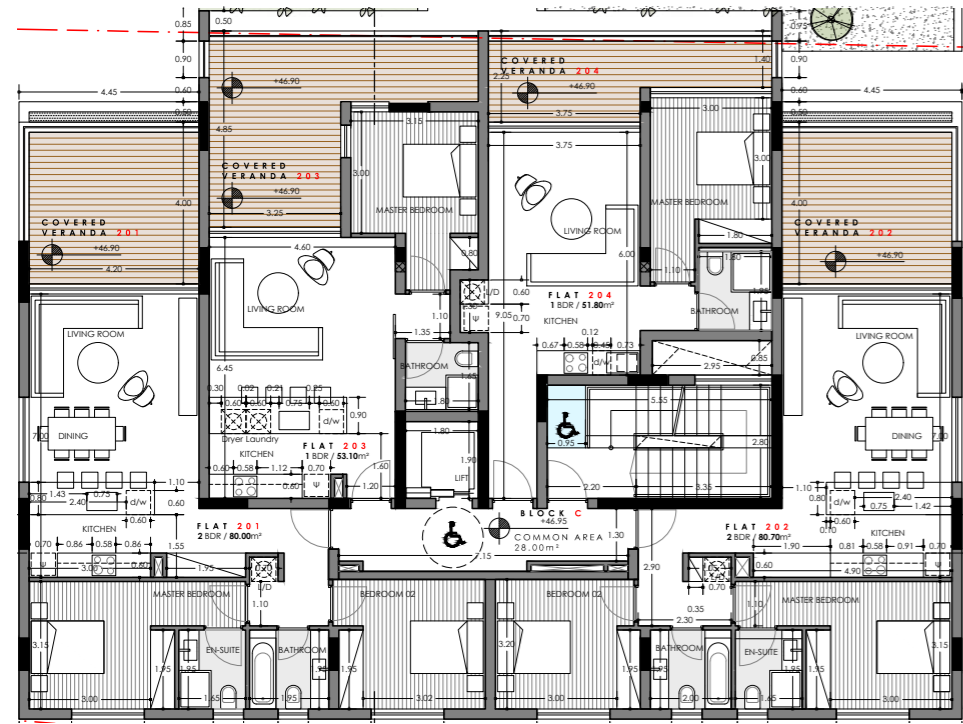
Block B

Apartment	Bedrooms	Bathrooms	Total Area (m <sup>2</sup> )	Internal Area (m <sup>2</sup> )	Covered Verandas m <sup>2</sup>	Green Terrace (m <sup>2</sup> )	Roof Terrace (m <sup>2</sup> )	Parking	storage (m <sup>2</sup> )
101	1	1	83.95	53.1	22	-	-	1	4.35
102	2	2	111.4	80.7	17.8	2.2	-	1	3.6
103	2	2	109.63	80	17.3	2.2	-	1	3.35
104	1	1	73.49	51.8	13.6	-	-	1	3.7

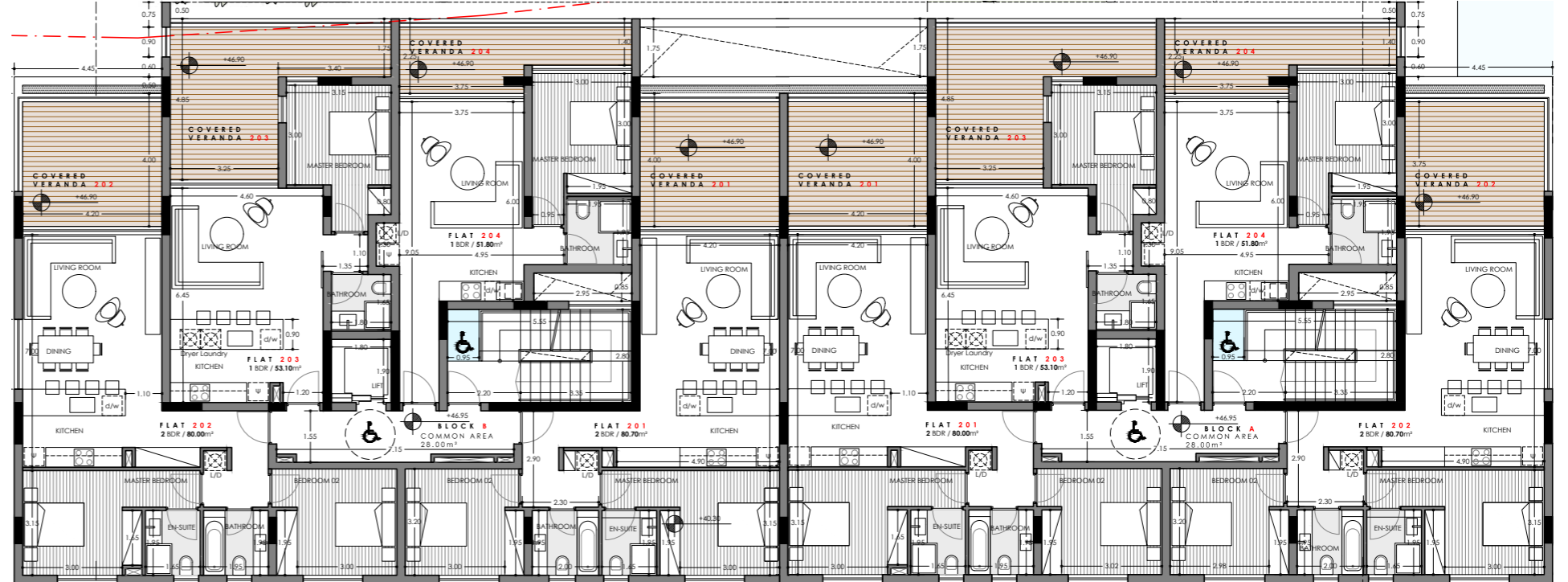
Block C

Apartment	Bedrooms	Bathrooms	Total Area (m <sup>2</sup> )	Internal Area (m <sup>2</sup> )	Covered Verandas m <sup>2</sup>	Green Terrace (m <sup>2</sup> )	Roof Terrace (m <sup>2</sup> )	Parking	storage (m <sup>2</sup> )
101	1	1	83.72	53.1	22	-	-	1	4.35
102	2	2	110.79	80.7	17.8	2.2	-	1	3.6
103	2	2	109.29	80	17.3	2.2	-	1	3.35
104	1	1	73.27	51.8	13.6	-	-	1	3.7

## Block C



## Block B



## Block A

## Block A

Apartment	Bedrooms	Bathrooms	Total Area (m <sup>2</sup> )	Internal Area (m <sup>2</sup> )	Covered Verandas m <sup>2</sup>	Green Terrace (m <sup>2</sup> )	Roof Terrace (m <sup>2</sup> )	Parking	storage (m <sup>2</sup> )
201	2	2	109.94	80	17.3	2.2	-	1	3.65
202	2	2	110.75	80.7	17.8	2.2	-	1	3.2
203	1	1	82.65	53.1	22	-	-	1	3.2
204	1	1	72.95	51.8	13.6	-	-	1	3.2

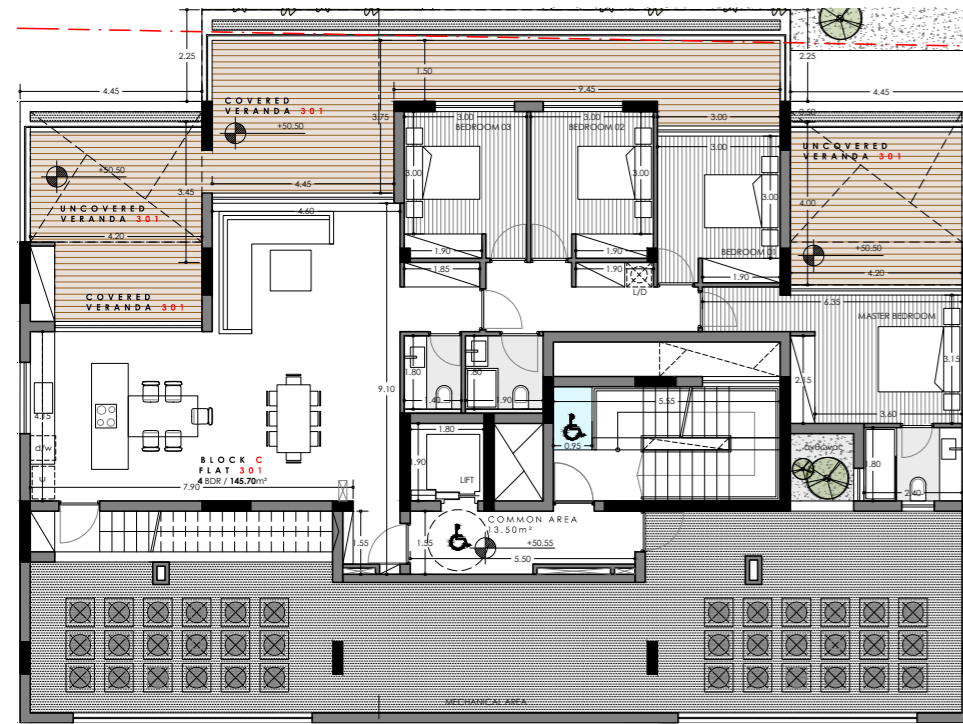
## Block B

Apartment	Bedrooms	Bathrooms	Total Area (m <sup>2</sup> )	Internal Area (m <sup>2</sup> )	Covered Verandas m <sup>2</sup>	Green Terrace (m <sup>2</sup> )	Roof Terrace (m <sup>2</sup> )	Parking	storage (m <sup>2</sup> )
201	2	2	110.74	80.7	17.8	2.2	-	1	3.2
202	2	2	109.63	80	17.3	2.2	-	1	3.35
203	1	1	82.69	53.1	22	-	-	1	3.2
204	1	1	72.99	51.8	13.6	-	-	1	3.2

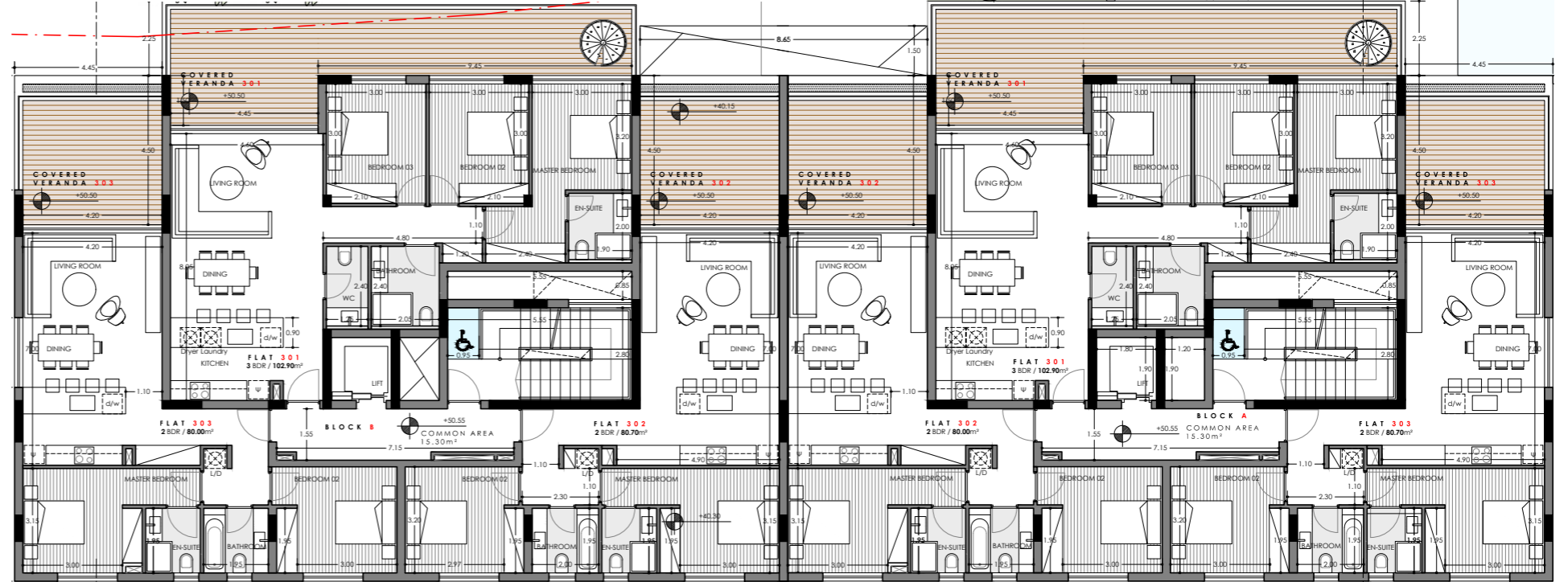
## Block C

Apartment	Bedrooms	Bathrooms	Total Area (m <sup>2</sup> )	Internal Area (m <sup>2</sup> )	Covered Verandas m <sup>2</sup>	Green Terrace (m <sup>2</sup> )	Roof Terrace (m <sup>2</sup> )	Parking	storage (m <sup>2</sup> )
201	2	2	109.59	80	17.3	2.2	-	1	3.65
202	2	2	110.39	80.7	17.8	2.2	-	1	3.2
203	1	1	82.47	53.1	22	-	-	1	3.2
204	1	1	72.77	51.8	13.6	-	-	1	3.2

## Block C



## Block B



## Block A

## Block A

Apartment	Bedrooms	Bathrooms	Total Area (m <sup>2</sup> )	Internal Area (m <sup>2</sup> )	Covered Verandas m <sup>2</sup>	Green Terrace (m <sup>2</sup> )	Roof Terrace (m <sup>2</sup> )	Parking	storage (m <sup>2</sup> )
301	3	3	286.59	102	38.5	-	131.2	1	5.25
302	2	2	110.39	80	17.3	2.2	-	1	4.1
303	2	2	111.65	80.7	17.8	2.2	-	1	4.1

## Block B

Apartment	Bedrooms	Bathrooms	Total Area (m <sup>2</sup> )	Internal Area (m <sup>2</sup> )	Covered Verandas m <sup>2</sup>	Green Terrace (m <sup>2</sup> )	Roof Terrace (m <sup>2</sup> )	Parking	storage (m <sup>2</sup> )
301	3	3	286.58	102	38.5	-	131.2	1	5.25
302	2	2	111.64	80.7	17.8	2.2	-	1	4.1
303	2	2	110.38	80	17.3	2.2	-	1	4.1

## Block C

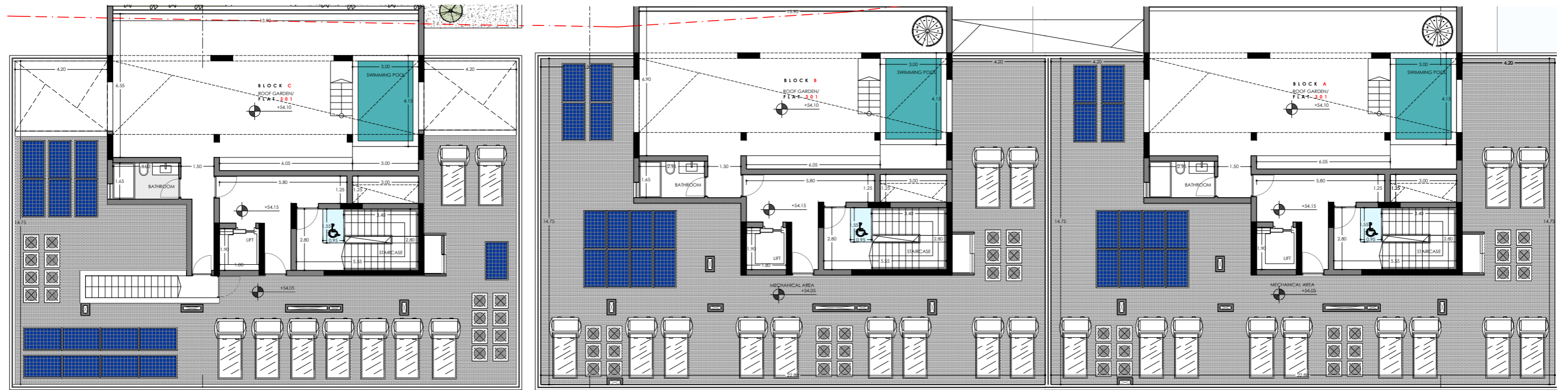
Apartment	Bedrooms	Bathrooms	Total Area (m <sup>2</sup> )	Internal Area (m <sup>2</sup> )	Covered Verandas m <sup>2</sup>	Green Terrace (m <sup>2</sup> )	Roof Terrace (m <sup>2</sup> )	Parking	storage (m <sup>2</sup> )
301	4	3	347.36	145.7	46.4	-	132.3	3	8

# Roof Terrace

Block C

Block B

Block A



## Block A

Apartment	Bedrooms	Bathrooms	Total Area (m <sup>2</sup> )	Internal Area (m <sup>2</sup> )	Covered Verandas m <sup>2</sup>	Green Terrace (m <sup>2</sup> )	Roof Terrace (m <sup>2</sup> )	Parking	storage (m <sup>2</sup> )
301	3	3	286.59	102	38.5	-	<b>131.2</b>	1	5.25

## Block B

Apartment	Bedrooms	Bathrooms	Total Area (m <sup>2</sup> )	Internal Area (m <sup>2</sup> )	Covered Verandas m <sup>2</sup>	Green Terrace (m <sup>2</sup> )	Roof Terrace (m <sup>2</sup> )	Parking	storage (m <sup>2</sup> )
301	3	3	286.58	102	38.5	-	<b>131.2</b>	1	5.25

## Block C

Apartment	Bedrooms	Bathrooms	Total Area (m <sup>2</sup> )	Internal Area (m <sup>2</sup> )	Covered Verandas m <sup>2</sup>	Green Terrace (m <sup>2</sup> )	Roof Terrace (m <sup>2</sup> )	Parking	storage (m <sup>2</sup> )
301	4	3	347.36	145.7	46.4	-	<b>132.3</b>	3	8



Livein Properties is a fully integrated development and construction company dedicated to creating better homes for people to live, learn, work and play. We focus on the area we know best – Limassol and the south coast of Cyprus – and have over 35 years of combined expertise in property and infrastructure construction, civil engineering and project management.

Our finger is on the pulse of what buyers want, and we continually monitor market trends and implement best practices to enhance building techniques, operations and residents' living experience. Clients rely on our diversified skills and depth of knowledge to maximize asset quality and secure strong investment returns.

All computer generated images included in this brochure are indicative of final specification and are subject to change. Information in this brochure has been prepared solely for the purpose of providing general information about the development and we have taken every care to ensure that the information provided is accurate at the time of its inclusion in this brochure, but do not guarantee the accuracy or completeness and shall not be liable for any loss or damage which may arise from reliance on the information. All illustrations and computer generated images reflect the artists' interpretation of the project and do not take into account the neighbouring buildings, physical structures, streets and landscape. The developers reserve the right to make modifications and changes to any or all architectural and interior features and finishes, brands, colours, materials, building design, specifications, ceiling heights, flooring patterns and floor plans without notification. Actual plans may have minor variations to the typical plans shown in this brochure. All matters will be governed by the applicable purchase and sales agreement. The company retains the copyright of all material in this brochure and may change the content or format at any time.

**8, Georgiou A' Street,  
4077 Germasogeia, Limassol-Cyprus**

**Tel: +357 25 320 520,  
Fax: +357 25 320 521  
info@livein.com.cy,  
www.livein.com.cy**



SCAN TO VISIT  
PROPERTY ONLINE